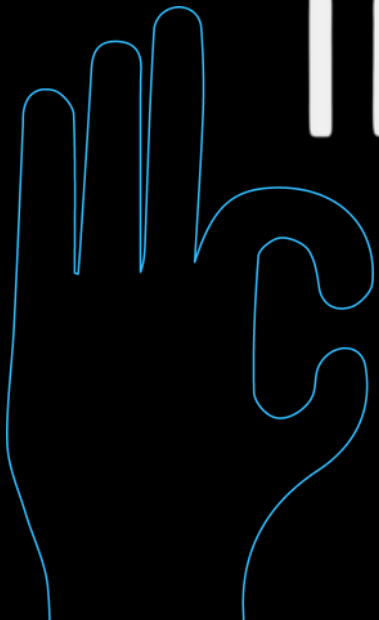




PREON

Graviton

INNOVATIONS





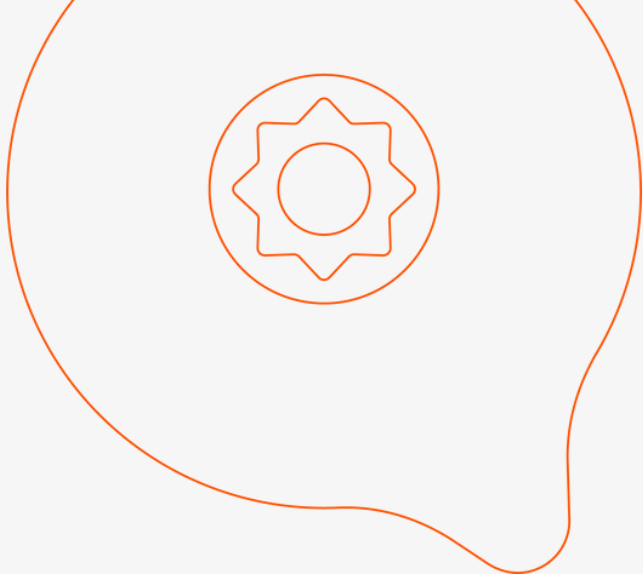
Here for you, and up there, too.

Welcome to the Graviton family. Congratulations on the purchase of your **PREON**. Before the fun can start, please check:

- Are you a trained professional?
- **Attention:** Only use the **PREON** in combination with the Rock Exotica or CMC - Arizona Vortex. Check the Arizona Vortex manual before use.

Now you're good to go.





Index.

1 Something about us

2 Your **PREON**

3 Pre-use checks

4 Assemble your **PREON**

5 Installation

6 Keeping your **PREON** in shape

7 Warranty

8 Contact



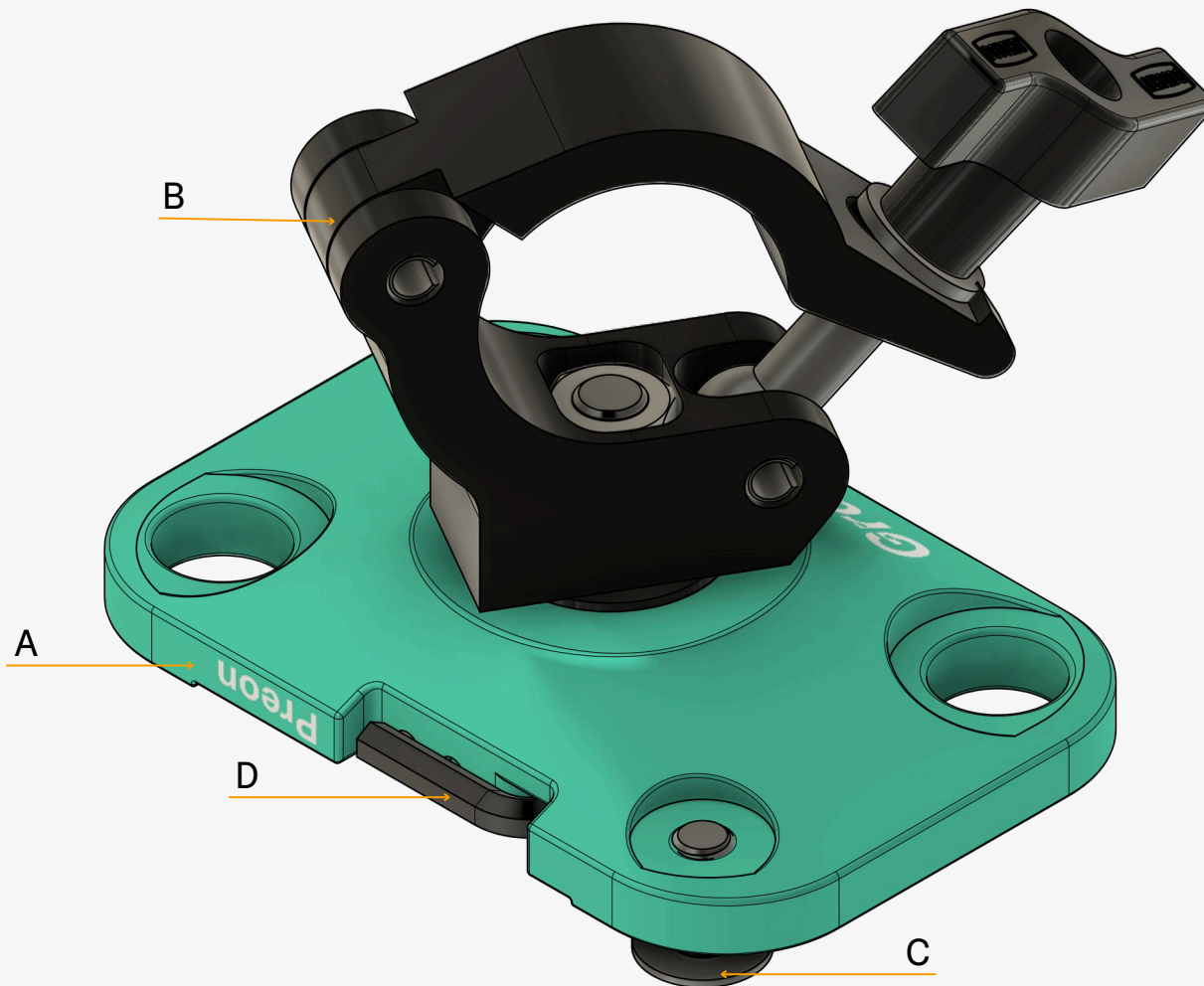
We make your work easier, because we **understand** your world.

Founded by climbers with field experience, **Graviton** is here to solve problems you didn't even know existed. Our mission is clear: to deliver quality products through **meticulous design** and **advanced engineering**.

As we say, the sky is the beginning. From our first to our latest creation Graviton is committed to making life easier for those who depend on **solid gear** at serious heights.

Our focus is on **practical solutions** that enhance **safety** and performance in demanding environments, ensuring tangible benefits. We did a damn good job of making our products look good, but always prioritize **quality** and rigorously testing and certifying our products for **reliability**.

Your PREON.



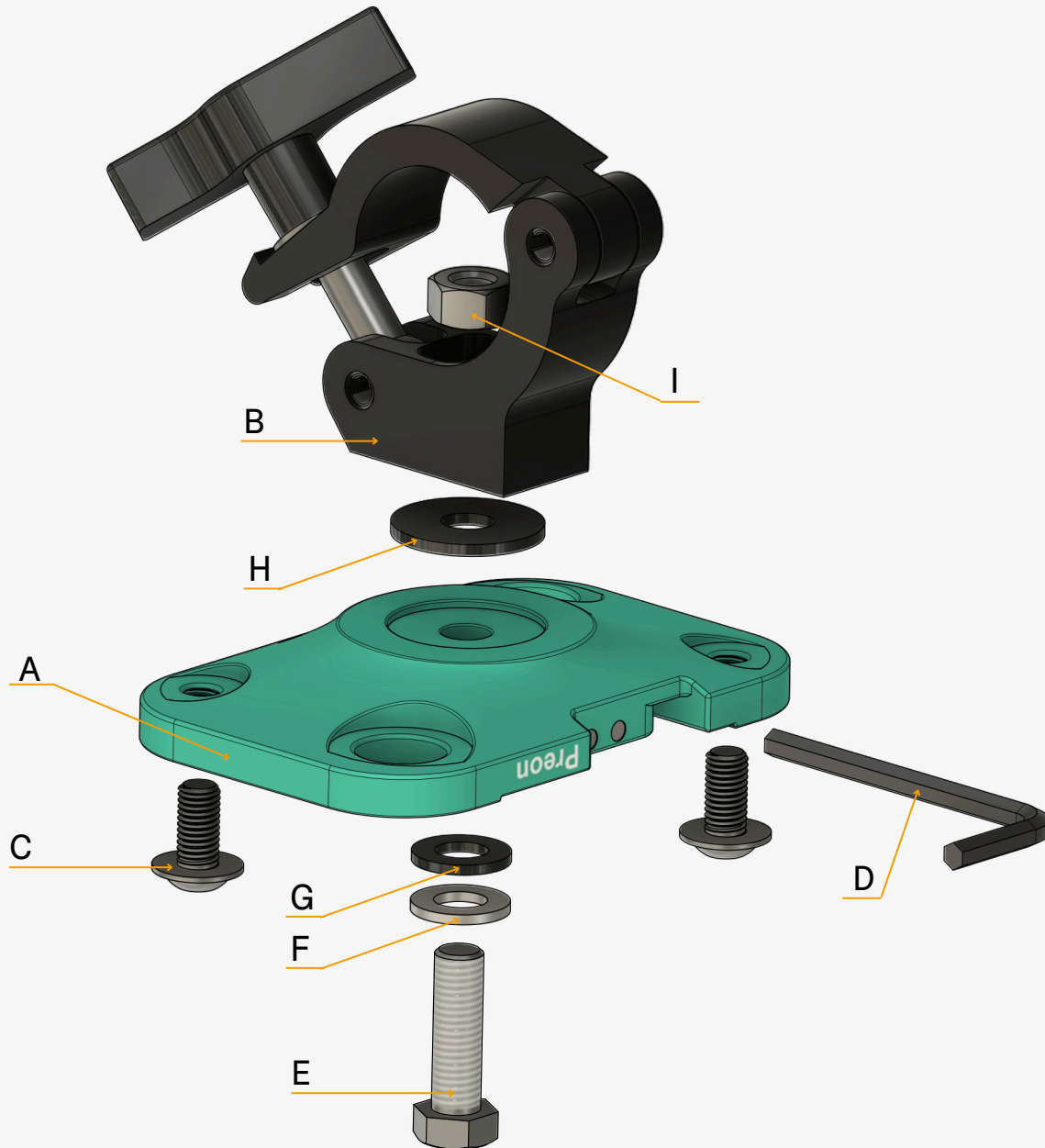
A **PREON**

B Half coupler

C 2x M10 bolts (ISO 7380-2)

D 6mm Hex key

Assemble your **PREON**.



A **PREON**

B Half coupler

C 2x M10 bolts (ISO 7380-2)

D 6mm Hex key

E M12 bolt

F Stainless steel washer

G Nylon washer 24mm

H Nylon washer 37mm

I M12 locknut

Assemble your **PREON**.

- Bolt the clamp to the **PREON**
 - Put some anti-seize on the M12 bolt (E) to prevent galling of the locknut (I)
 - Assemble all parts in the correct order shown in the image (E, F, G, A, H, B, I).
 - Place the locking end of the locknut (I) facing up. The three triangles on the locknut (I) must be visible.
 - Ensure the clamp can rotate freely, has no play and the locknut (I) is properly secured.
- Add some anti-seize on the 2 M10 bolts (C) and insert in the threaded inserts of the **PREON** (A) for storage.
- Store the 6mm hex key (D) in the magnetic slot of the **PREON** (A).

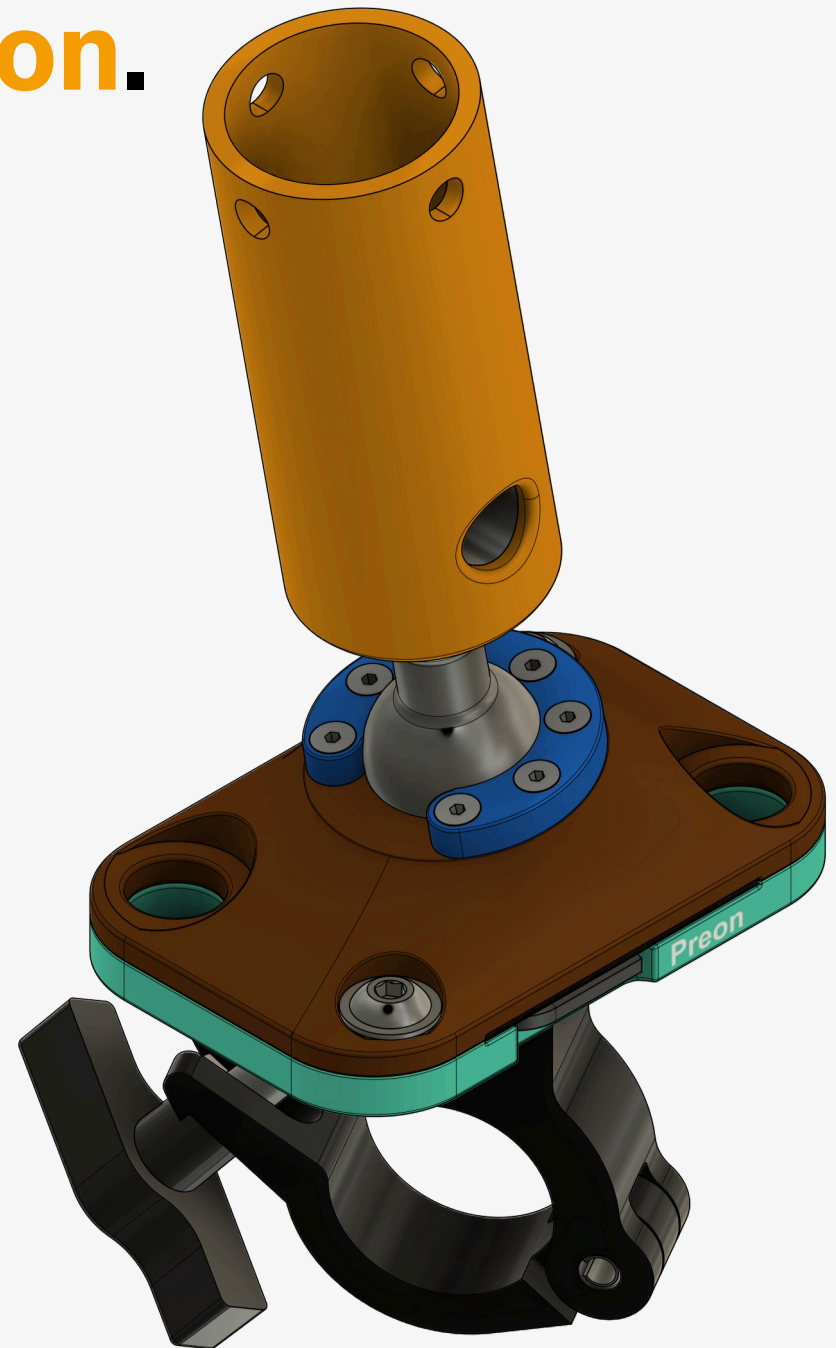
Pre-use checks.

Always check:

- For cracks, deformations and possible damages.
- Ensure the clamp is properly bolted to the **PREON** without any play.
- The clamp should rotate while keeping the nut fully engaged.
- Ensure the threaded inserts are undamaged, fully engaged and fixed.

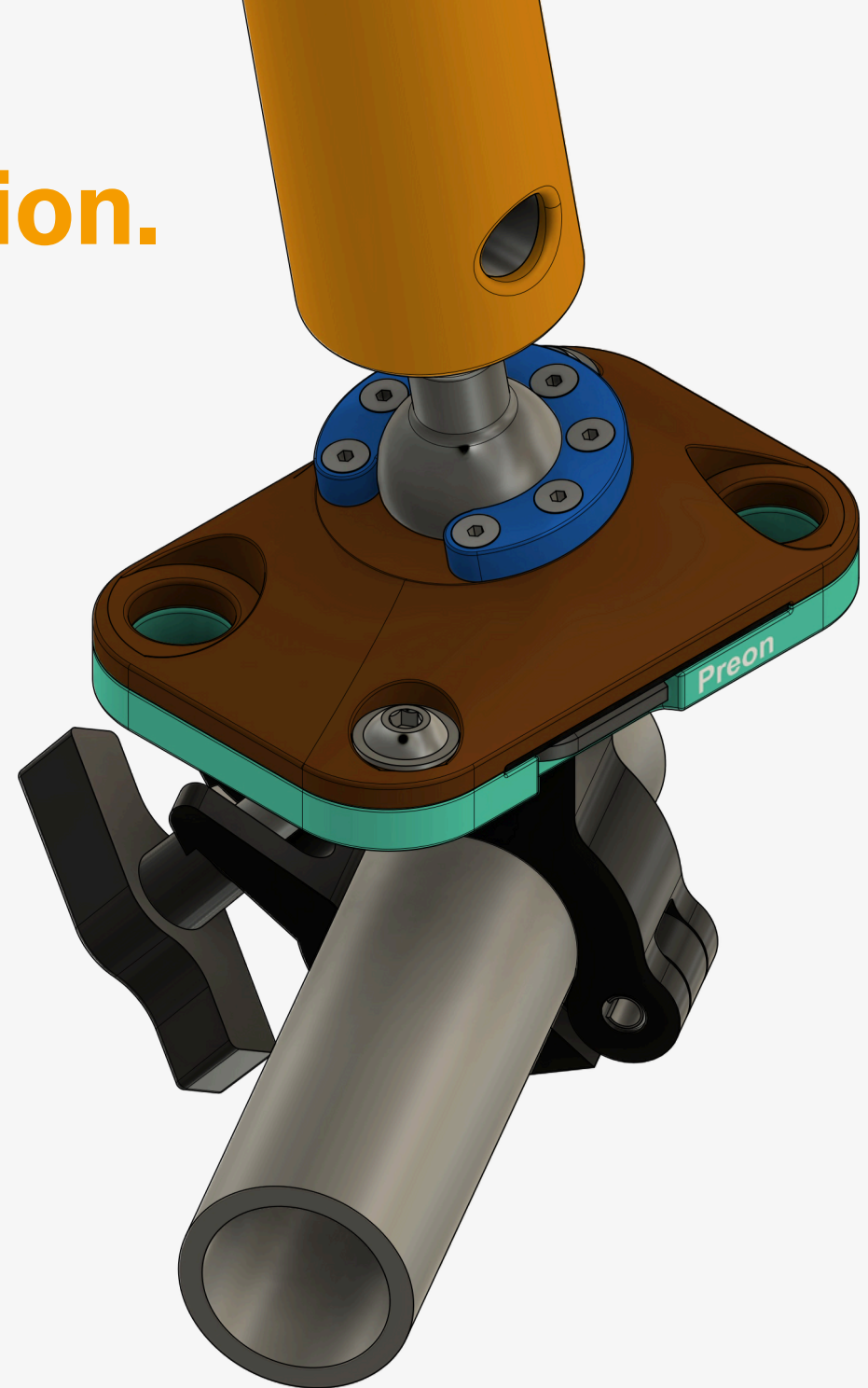
Installation.

- Bolt the **PREON** to the flat feet using both of the supplied M10 hex bolts, use some anti-seize to prevent thread galling of the stainless steel bolts.
- Store the 6mm hex key (D) in the magnetic slot of the PREON (A).



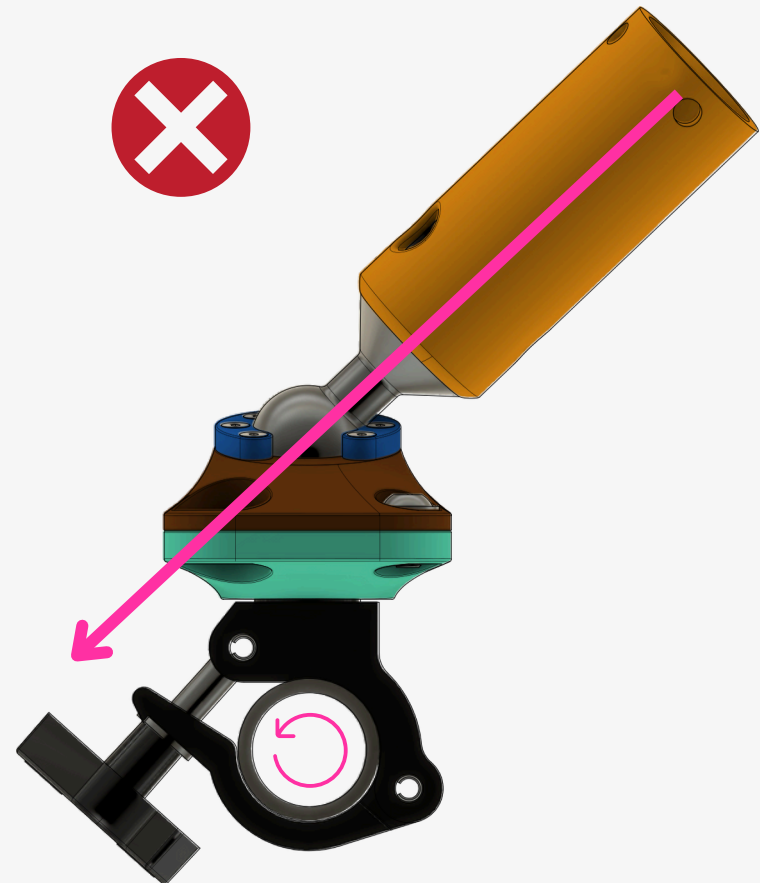
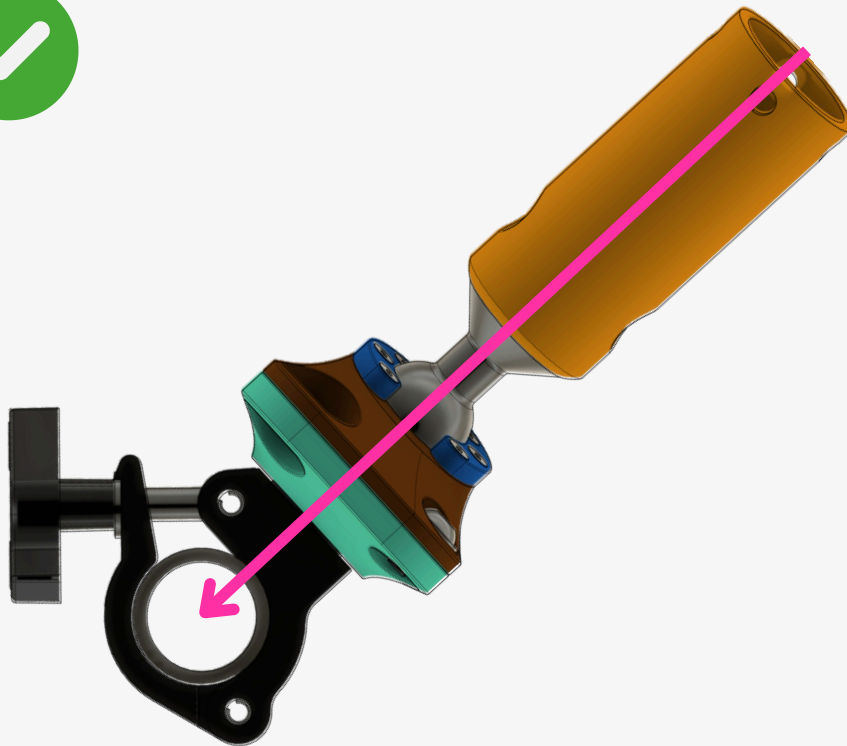
Installation.

- Attach the half coupler to a 48-51mm (1.89"–2.01") diameter tube.
- Tighten the half coupler sufficiently to prevent any sliding during use.
- Ensure the tube and structure are of sufficient strength for your job.

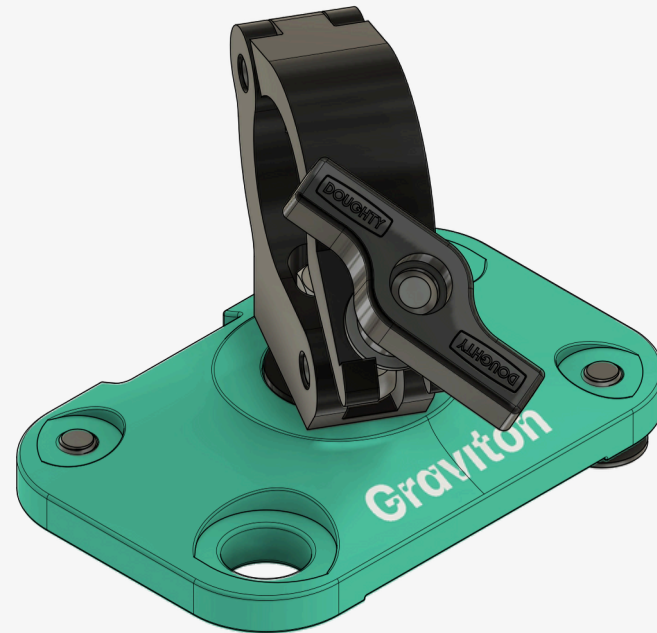
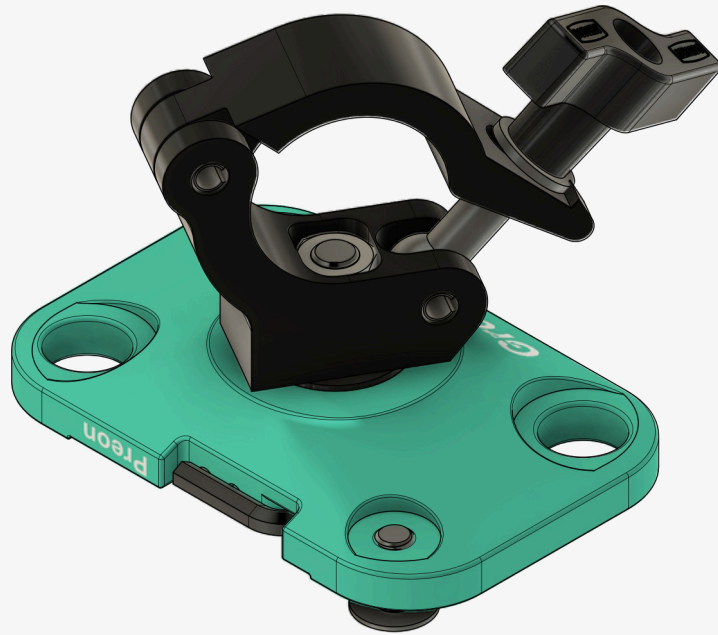


Installation.

- Ensure the orientation of the vortex feet is perpendicular to the center of the tube to prevent any rotation during use.



Keeping your **PREON** in shape.



PREON loves to stay **clean** and feel seen, so always **visually** inspect her before use. Make sure there are **no cracks** or **deformations**, the clamp is securely **tightened and** threaded holes are clean and **lubricated**.

Have her checked at least once every 12 months by a competent person (approved by the manufacturer).

Warranty.

At Graviton, we stand by our products with pride and assurance. The **PREON** is covered under our comprehensive warranty as outlined in the general conditions of sale. Here's what you need to know:

Should your **PREON** prove defective or encounter any issues during the warranty period, we've got you covered. Our commitment is to repair or replace any faulty components after a thorough inspection by our team.

Important Considerations:

- **Modifications:** Any modifications made by the user without prior written authorization from Graviton will void the warranty. Such unauthorized changes release Graviton from any liability for damages caused by the defective product.
- **Spare Parts:** Using non-original spare parts or those not explicitly specified by Graviton will also void the warranty and release us from liability.

For these reasons, we strongly advise all customers to contact Graviton technical support for any assistance or when in doubt.

Please read the instructions in this manual carefully and follow all guidelines before using your **PREON**. This ensures optimal performance and helps maintain the integrity of your warranty.



Graviton

Contact.

Contact

+31-(0)85 – 1301 789

sales@gravitoninnovations.com

Postal address

PO Box 125 - 5490 AC

Sint-Oedenrode

The Netherlands

Coloring page.

